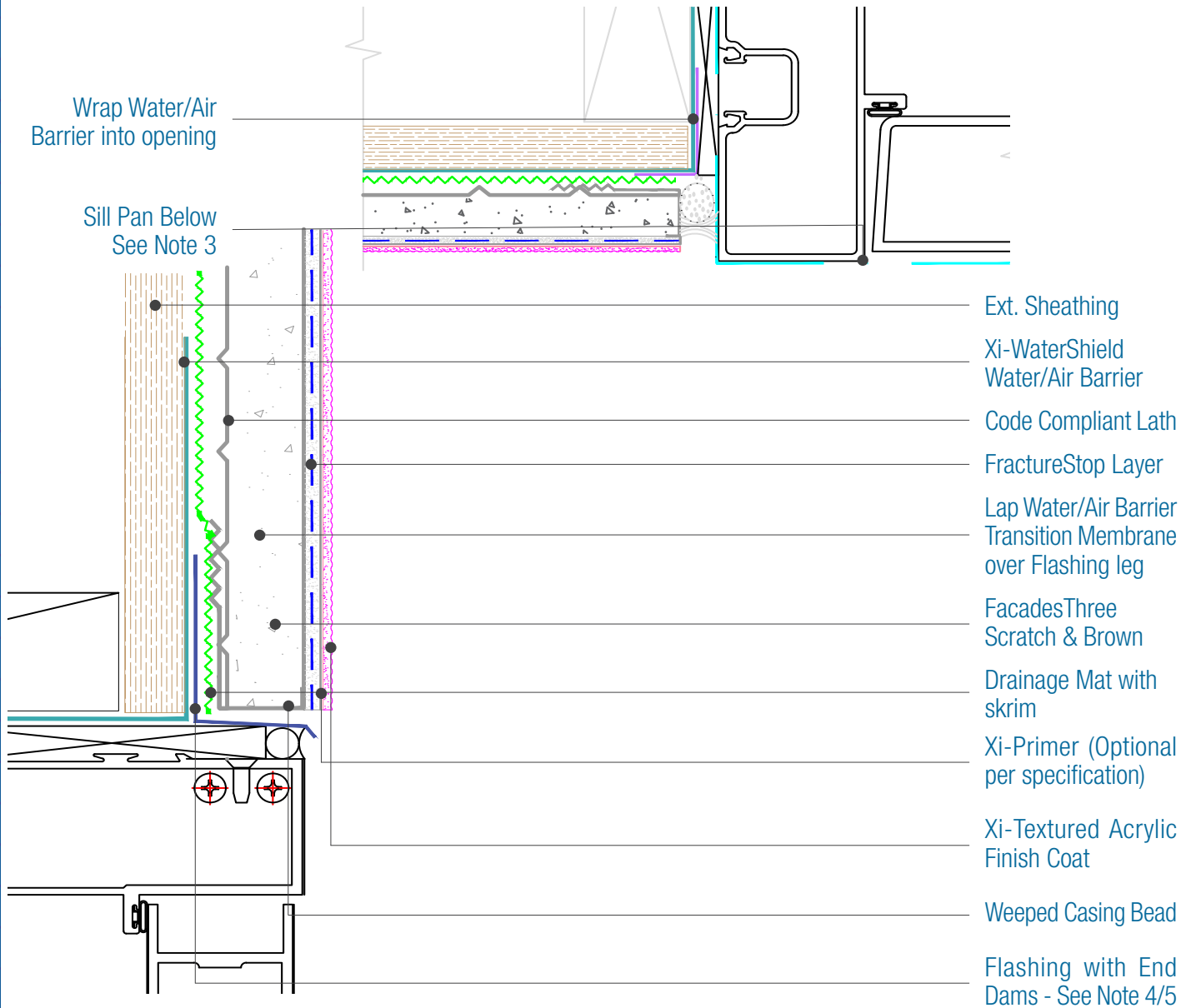




15262 Capital Port
 San Antonio, TX 78249
 1-800-611-6602
 facadesxi.com

FacadesThree IronClad Assembly Storefront Window Head and Jamb

Date. 06-15-2021 | Detail. F3IC.II.3 v1



NOTES:

1. FXI WaterShield transition and accessory products and installation can be found in the project specifications, product datasheets and the WaterShield Details.
2. Provide Air Tight seals at all perimeter of opening for an airtight seal.
3. The Door must be set in a pan flashing and rough opening protection wrapped into that pan flashing.
4. Responsibility of the flashing is not necessarily that of the plastering contractor and should be denoted in the contract documents.
5. Flashing must be installed with End Dams and be completely watertight

DISCLAIMER: FACADESXI details are recommendations that should be used for guidance only. There may be equivalent means of installation that are not shown in FACADESXI assembly details. All FACADESXI products shall be installed in accordance with FACADESXI product datasheets and all applicable building codes and industry standard practices. The design, engineering and final details incorporating any FACADESXI product are the sole responsibility of the project design professional. FACADESXI is not responsible for determining the acceptability and/or applicability of any FACADESXI product or detail for any specific project or condition. FACADESXI disclaims all liability for improper installation, workmanship, or design by a third-party. EXCEPT FOR ANY EXPRESS REPRESENTATIONS AND WARRANTIES BY FACADESXI, ALL IMPLIED WARRANTIES OF ANY KIND, INCLUDING BUT NOT LIMITED TO WARRANTIES OF MERCHANTABILITY OR FITNESS FOR A PARTICULAR PURPOSE OR COMPLIANCE WITH LAWS OR GOVERNMENT RULES OR REGULATIONS APPLICABLE TO THE PROJECT, ARE HEREBY DISCLAIMED. FACADESXI's website should always be consulted for the latest version of any details and/or product information. Contact FACADESXI for any technical assistance.